

DETTAGLI

- 2 tasche
- Abbottonatura nascosta

TAGLIE

XS ÷ XXXL
Slim Fit

COLORE

1000 Avana

TESSUTO

100% cotone
160 g / m²



Le misure indicate si riferiscono alle taglie **S** per i capi femminili, **L** per i capi maschili. Per i capi a taglia unica le misure indicate sono effettive.

COLORI DISPONIBILI



1000 Avana

TABELLE TAGLIE
E CORRISPONDENZE

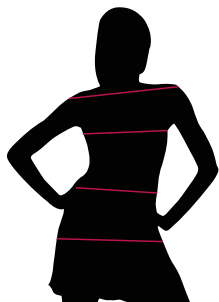


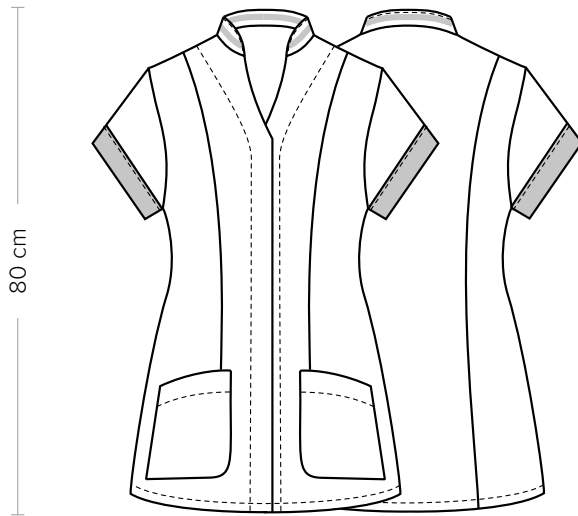
TABELLA ST-K1 SLIM FIT		XS	S	M	L	XL	XXL	XXXL	4XL	5XL
1	TAGLIA									
2	1 - SPALLE									
3	2 - CIRCONFERENZA TORACE	82-86	87-90	91-94	95-100	101-106	107-114	115-122	123-132	135-142
4	3 - CIRCONFERENZA VITA	71-75	76-79	80-83	84-90	91-97	98-106	107-116	117-126	127-136
	4 - CIRCONFERENZA BACINO	92-96	97-100	101-104	105-110	111-116	117-124	125-132	133-142	143-152

GUIDA ALLE TAGLIE **1)** Prendere le misure anatomiche (corpo con abbigliamento intimo) senza stringere mantenendo ben teso il metro. **Nota:** nel caso vogliate indossare dei camici già con dell'abbigliamento sotto prendete le misure già abbigliati. **2)** Nel caso tra le misure prese vi fosse una misura a cavallo fra 2 taglie vi consigliamo di prendere quella più grande. **3)** Le misure della tabella sono espresse in centimetri.

AURELIA

ITEM CODE
16P09K867

Giblor's
italian work/life specialist



DETAILS
- 2 pockets
- Concealed buttoning

SIZES
XS ÷ XXXL
Slim Fit

COLOURS
1000 Avana

FABRIC
100% cotton
160 g / m²



The measures indicated refer to sizes **S** for women, **L** for men. For one-size-fits-all garments, the measurements indicated are effective.

AVAILABLE COLOURS



1000 Avana

SIZE TABLES
AND CORRESPONDENCES



TABLE ST-K1 SLIM FIT		XS	S	M	L	XL	XXL	XXXL	4XL	5XL
1	1 - SHOULDERS									
2	2 - CHEST CIRCUMFERENCE	82-86	87-90	91-94	95-100	101-106	107-114	115-122	123-132	135-142
3	3 - WAIST CIRCUMFERENCE	71-75	76-79	80-83	84-90	91-97	98-106	107-116	117-126	127-136
4	4 - HIPS CIRCUMFERENCE	92-96	97-100	101-104	105-110	111-116	117-124	125-132	133-142	143-152

SIZE GUIDE **1)** Take the anatomical measurements (body with underwear) without tightening, keeping the measuring tape taut. Note: in case you want to wear of the gowns already with the clothing underneath take the measurements already dressed. **2)** If there is a measure between 2 sizes between the measurements taken, we advise you to take the bigger one. **3)** The measurements in the table are expressed in centimeters.

GIBLORS.COM